

COMMUNITY ACCESS TO THE ARTS

# Impact Report

2025



Our Accountability Report to YOU, Our Supporters:

# THANK YOU!

Your generosity brought life-changing programs to people with disabilities in 2025.

## YOUR IMPACT IN 2025:



Kalie (Riverbrook Residence) taps into her love of dance at CATA.



**Dear CATA friends and supporters,**

***What does it mean to change a person's life?  
To open a door for someone that has long been closed?  
To shape a community where everyone belongs?***

THIS is the impact you're making through your support! Your generosity transforms the lives of people with disabilities—empowering CATA artists to build confidence, develop skills and talents, and share all they have inside them.

Here are a few snapshots of how you made a difference for CATA artists in 2025:

- **Middle-school student Nylah** lights up when CATA brings dance workshops to her classroom. Once hesitant to join others, she now moves freely with her classmates, typing “F-U-N!” on her communication device.
- **Jacob steps into a new role as a paid CATA Faculty Assistant**—helping co-teach music workshops for teens with disabilities. With mentorship and support, he's growing his confidence and building job skills for a future full of possibility.
- **Scott rehearses a scene from Shakespeare.** Social situations once felt overwhelming for Scott. Through CATA acting workshops, he's blossomed—trying new things and growing his confidence.
- **Kaylea, her siblings, and mother** gather at the CATA studios to create art together with other local families—pushing back against isolation and finding the community they've been seeking.

**When you give to CATA, you are helping children, teens, and adults with disabilities grow and thrive.**

You are supporting local families and caregivers. And you are making our community a better place—affirming that everyone deserves to live a full and creative life.

Our work is only possible because of your dedicated support. Donations make up 85% of our annual budget. It's no exaggeration to say that without your gifts, CATA would not exist.

We're excited to share with you all you made happen in 2025 for CATA and our artists! If you have feedback or would like to get more involved, please reach out. I would love to hear from you!

With deep gratitude,



**Margaret Keller**  
Executive Director





# CATA's Community-Based Model

Community Access to the Arts nurtures and celebrates the creativity of children, teens, adults, and elders with disabilities, focusing especially on people with intellectual and developmental disabilities, autism, and brain injuries.

Through innovative, weekly programs in painting, dance, acting, music, juggling, yoga, creative writing, and more, CATA artists tap into their talents, express who they are, and forge community.

CATA has built a community-based model rooted in partnerships with disability agencies, day habilitation centers, residences, nursing homes, and schools to reach people with disabilities of all ages across Berkshire and Columbia counties.

When CATA artists thrive, our whole community flourishes—with a ripple effect that spreads out to parents, siblings, teachers, caregivers, neighbors, and art-lovers everywhere.

## Who We Serve:

**100%**

have disabilities, including developmental & intellectual disabilities, autism, and brain injuries.

**90%**

of adults live in assisted living, group homes, or shared living homes in areas where transportation is often challenging.

**80%**

are low income

**All**

access CATA at highly reduced or no cost—thanks to YOU!

**YOU**

open doors for people with disabilities to create and thrive!

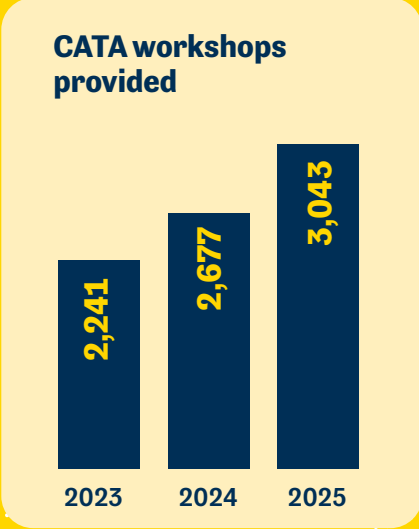
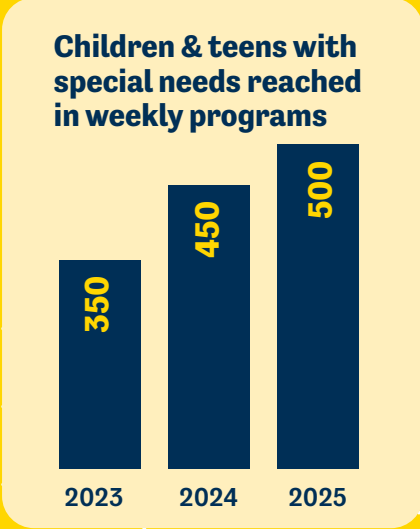
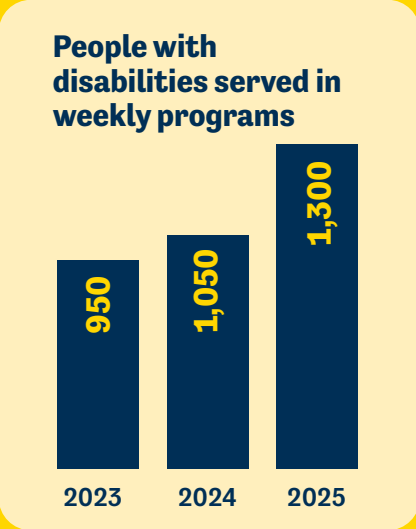




Marissa (BCArc) develops her talents as a painter—thanks to you!

## Your Impact By the Numbers

Your support is helping us reach more CATA artists:



# Your Impact on Children

➔ **You helped children with disabilities grow and discover their talents in local schools.** CATA delivered intensive, multi-week arts programs to record numbers of elementary students with disabilities in Great Barrington, Lee, Dalton, Pittsfield, and beyond—helping children build skills that will impact the rest of their lives.



➔ **You helped families and children with special needs connect, create, and thrive.** Families and caregivers of children with disabilities tell us they often feel isolated and crave opportunities to connect with families like theirs. Your support fueled our free monthly “Art & Tea” program where families can exchange resources, find support, and enjoy fun arts activities together as a family.



## How Children Benefit

### **Academic Engagement:**

CATA supports children’s pre-math and language skills, helping them achieve in school.

### **Confidence:**

Children discover their talents and feel pride in their accomplishments.

### **Friendships:**

Children build social skills and make friends.

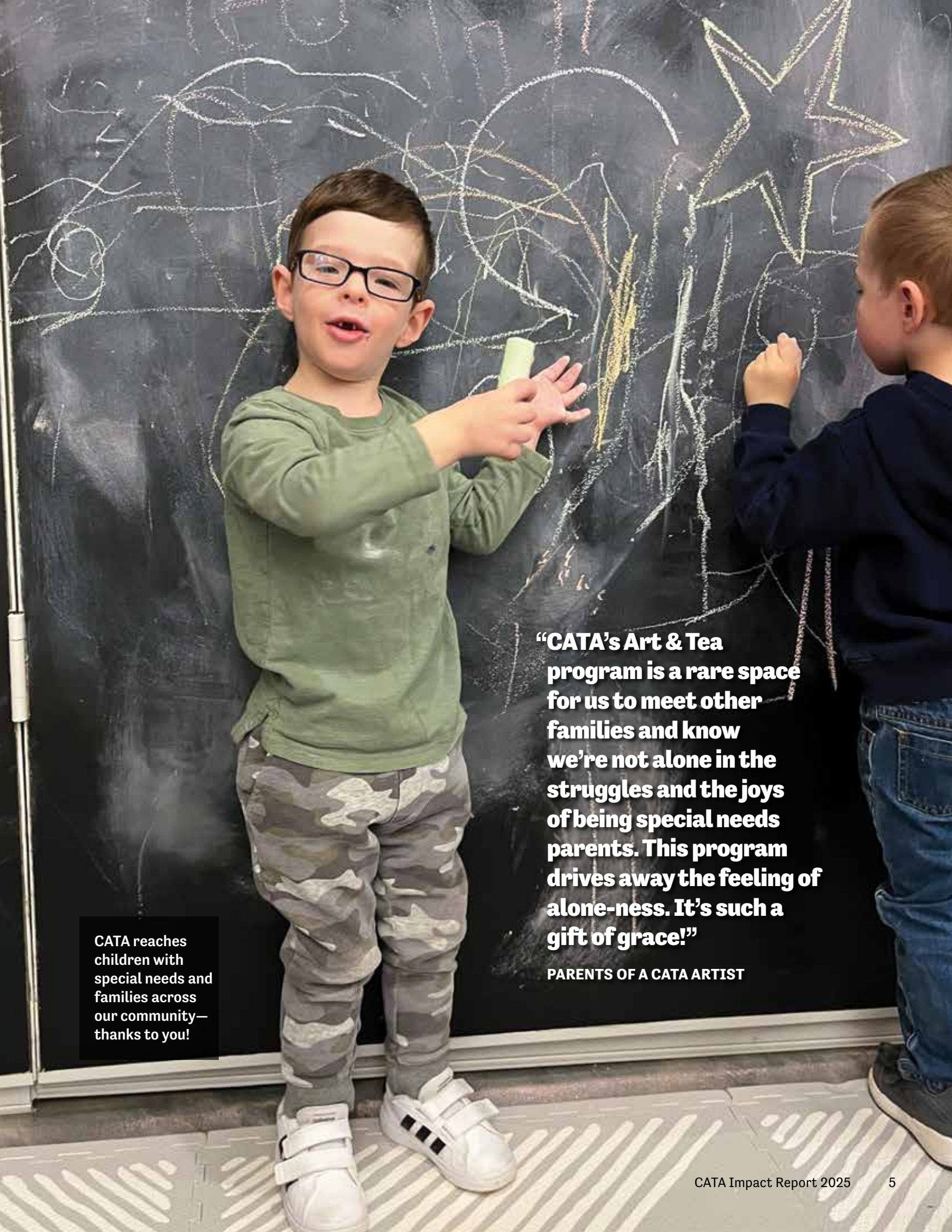
### **Emotional Regulation:**

Children build skills to calm, focus, and stay engaged.

### **Communication Skills:**

Children express ideas and feelings through movement, music, and art.





CATA reaches children with special needs and families across our community—thanks to you!

**“CATA’s Art & Tea program is a rare space for us to meet other families and know we’re not alone in the struggles and the joys of being special needs parents. This program drives away the feeling of alone-ness. It’s such a gift of grace!”**

**PARENTS OF A CATA ARTIST**

# Your Impact on Teens



➔ **You brought CATA to 30 schools and classrooms so teens with disabilities could grow at this critical moment in their lives.** CATA is the largest outside provider of arts programs for students with disabilities in Berkshire County schools. With your support, students in special education, alternative learning, and after school programs across 9 districts tapped into their talents and built skills through weekly arts workshops.

➔ **Thanks to you, CATA reached students all year round!** You helped us partner with local schools to bring robust summer school programs to students with disabilities—helping students catch up academically, develop new skills, and maintain consistency in their learning.



Teachers  
and school staff  
**LOVE CATA too!**



**100%**  
rank the quality of  
CATA programs highly.

**100%**  
want to continue to  
receive CATA programs.

**96%**  
would do MORE CATA  
if funding were available.



## How Teens Benefit

**Team Work & Communication:**  
Students learn skills to work together and engage confidently in groups.

**Goal Setting:**  
Students build on their success week to week and take pride in their achievements.

**Belief in their ability to succeed!**

**Stress Relief:**  
Students learn to self-soothe and manage stress when they feel overwhelmed.

**Focus:**  
Students improve attention spans while engaging in stimulating, creative activities.



Lahna follows her passion for painting and visual arts at CATA.

**“Because of CATA my shyest students have blossomed. They get to express themselves the way they want.**

**A lot of them have a hard time showing up to school, but they always show up when they know it’s a CATA day.”**

**SPECIAL EDUCATION TEACHER,  
PITTSFIELD HIGH SCHOOL**

## Students from **30** schools and classrooms participated in multi-week CATA programs

### **Berkshire Hills Regional School District**

W.E.B. DuBois Middle School  
Monument Mountain Regional High School  
Muddy Brook Elementary School

### **Central Berkshire Regional School District**

Craneville Elementary School  
Nessacus Regional Middle School  
Wahconah Regional High School

### **Hoosac Valley Regional School District**

Hoosac Valley Regional Middle School  
Hoosac Valley Regional High School

### **Lee Public Schools**

Lee Middle & High School

### **Lenox Public Schools**

Lenox Memorial High School

### **Mt. Greylock Regional School District**

Mt. Greylock Regional High School

### **North Adams Public Schools**

Brayton Elementary School

### **Pittsfield Public Schools**

Adolescent Support Program at Pittsfield High School  
Allendale Elementary School  
Crosby Educational Academy  
Crosby Elementary School  
Eagle Educational Academy  
Innovation Center at Pittsfield High School  
Innovation Center at Reid Middle School  
Pittsfield High School  
Pittsfield High School  
Transitions Program  
Positive Options Program at Berkshire Community College  
Reid Middle School  
21st Century Community Learning Centers  
Pittsfield Public Schools Summer Program  
Herberg Middle School Afterschool Program  
Morningside Community Program Afterschool Program  
Reid Middle School Afterschool Program

### **Taconic Hills Central School District**

Taconic Hills Middle School  
Taconic Hills High School

# Your Impact on Adults

## ➔ You brought more programs to more adults with disabilities than ever before.

Demand for CATA was at an all-time high in 2025: We received record calls from families and disability agencies asking us for more arts programs for people in their care. YOU helped us meet that need, growing workshops by 14% in the last year alone.



## ➔ You helped launch innovative new pilot programs for CATA artists.

CATA artists explored their talents in photography and filmmaking, costume and set design, animation, and more. You also helped grow our Supported Studio program, where CATA artists work independently to create paintings, sculptures, drawings, and other self-directed projects with the support of a CATA Faculty mentor.

## ➔ You helped CATA artists take on paid leadership roles as Faculty Assistants, Curatorial Assistants, ambassadors at CATA events, camera operators, lighting designers, and more.

## ➔ You helped fuel our new CATA Advisor Council, where CATA artists, families, and caregivers share feedback and ideas to guide our work in the community.



Corinne (BFAIR) and Jeff (BCArc) learn new skills in CATA programs.



### How Adults Benefit

#### **Belonging:**

Through CATA programs, people with disabilities build deep friendships and social bonds, many meeting friends they would otherwise not have encountered.

#### **Improved Well-Being:**

CATA artists discover their abilities and become more resilient across every aspect of their lives. Through movement, art, and music, people with disabilities relieve stress and increase physical, mental, and emotional well-being.

#### **Self-Expression:**

People with disabilities share their voices and perspectives through the arts. Many gain a profound sense of identity through their work as dancers, actors, and painters.



Karen (UCP of Western MA) learns drumming techniques and lets her creativity fly!

**“CATA is one of my favorite things. I love the music and movements. Good exercise!”**

CATA ARTIST

# Your Impact on Elders

**“CATA enhances our residents’ quality of life—and also supports our nursing staff, reinforcing their efforts and revealing new dimensions of the residents in their care.”**

STAFF AT LOCAL SKILLED NURSING HOME

➔ **Because of you, elders in local nursing homes, including many with Alzheimer’s and dementia, shared their life stories and talents through CATA programs.** Every week, CATA faculty visited nursing and eldercare settings across the Berkshires, uplifting and engaging residents through music, stories, and artwork.



➔ **You helped bring the stories of local elders out to the whole community.** “The Ways I Can,” a powerful original song written collaboratively by elders in CATA’s Art Cart program, was performed at CATA’s Annual Performance for an audience of 1,000 community members.



## How Elders Benefit



**Improved Quality of Life:** CATA lifts residents’ mental well-being and reduces depression, improving health outcomes.

**Memory Care:** CATA programs help elders with dementia access memories and connect with their families and caregivers.

**More Energy and Engagement:** CATA inspires residents in nursing homes to talk, move, and connect.

**Supporting Direct Care Staff:** Caregivers learn more about each resident, improving their care.



Residents at local nursing homes in Williamstown, Pittsfield, Lenox, and beyond share their life stories and talents.

# You brought CATA artwork out to the community...

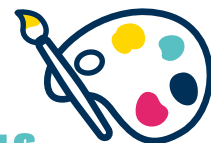
## ➔ CATA artists showcased their talents in vibrant art exhibits:

Thanks to you, thousands of people witnessed the work of artists with disabilities in CATA's exhibits at the Clark Art Institute, Lichtenstein Center for the Arts, Berkshire Botanical Garden, Mass Audubon Pleasant Valley Wildlife Sanctuary, and more. Over 425 CATA artists exhibited artwork—because of your generosity.

## ➔ CATA artists took on leadership roles as curators and exhibit guides: Your support created new opportunities for CATA artists to help curate art exhibits and take on leadership roles as CATA Ambassadors, giving exhibit tours to students from local public schools.



Heou (Blue Q / BCARC), Michelle (BFAIR), and Myles (BCARC) share their talents in CATA exhibits.



**“I like making art because I can be myself and see what I come up with. It makes me feel very happy.”**

**CATA ARTIST**



**“My art deserves to be enjoyed by the masses. It’s me in a nutshell— that’s me on the canvas.”**

CATA ARTIST

Jacob greets guests and leads tours of CATA’s Annual Art Show at the Clark Art Institute as a paid CATA Ambassador.



**“Through CATA,  
we get to see  
parts of our  
daughter that  
we might not  
have known.”**

**PARENTS OF A CATA ARTIST**

**Kambree performs  
in CATA’s Annual  
Performance at  
Shakespeare & Company.**

# ...and you brought the talents of CATA artists to the stage!

➔ **Your generosity fueled a vibrant, sold-out Annual Performance where CATA artists shared their creativity with 1,000 community members.** CATA artists shaped every part of the show: crafting performance pieces, costumes, set design, music and lyrics—even working backstage operating cameras, lights, and sound, and assistant directing!

➔ **Students celebrated disability at CATA's Dress Rehearsal** Because of you, 250 students in special education and mainstream classrooms attended our Annual Performance Dress Rehearsal. Teens in special education programs saw people like themselves taking center stage and students in traditional classrooms learned about the talents of people with disabilities.



Randy (High Spirit Community Farm / ExtraSpecialTeas) brings his talents to the stage.



Save the Date  
**2026 CATA  
Gala & Annual  
Performance!**



May 9, 2026 (Gala)  
May 10, 2026 (Matinee)  
at Shakespeare  
& Company (Lenox, MA)

➔ **Families, friends, and caregivers celebrated the talents of CATA artists at our CATA Sharings—** dynamic community events where our artists share all they're exploring in our programs. CATA artists helped lead drumming, acting, and dance performances in Sharings at MASS MoCA, Shakespeare & Company, and Berkshire South Regional Community Center.

➔ **A sold-out crowd celebrated CATA writers at The Mount, Edith Wharton's Home.** Guest readers and local luminaries brought down the house with brilliant readings of poetry and short stories by the CATA Writers' Workshop.

# You bring CATA all across

**Every day, your donations bring life-changing arts programs to children, teens, and adults with disabilities across our community. Take a peek into a day in the life of CATA:**

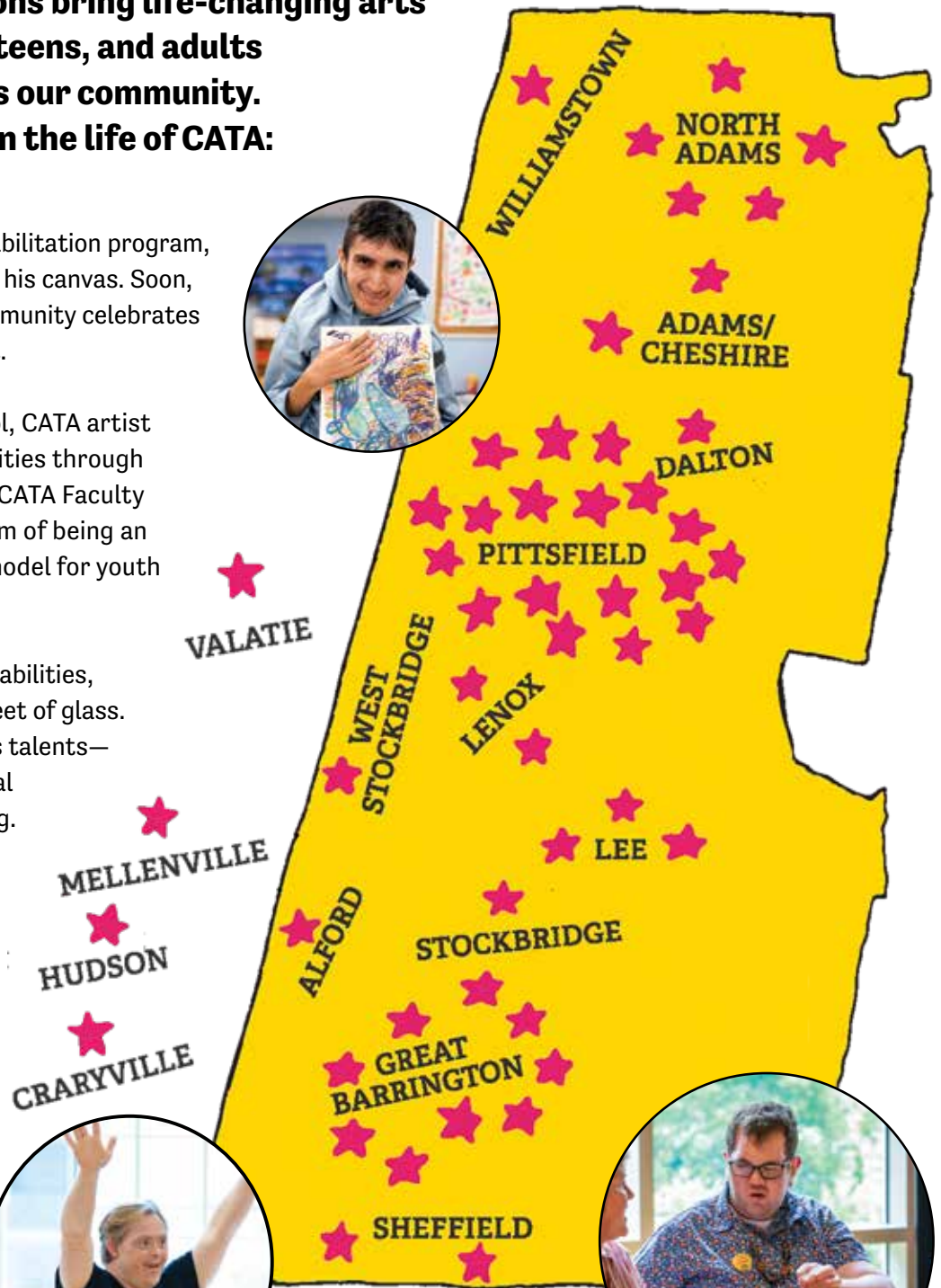
**North Adams:** At a local day habilitation program, Josué adds a stroke of purple to his canvas. Soon, he'll beam with pride as the community celebrates his artwork in a CATA art exhibit.



**Pittsfield:** At a local high school, CATA artist Dan leads students with disabilities through a fun dance warm up. As a paid CATA Faculty Assistant, Dan is living his dream of being an arts leader—serving as a role model for youth with disabilities.

**Hudson:** Cory, an adult with disabilities, brushes watercolor across a sheet of glass. When he finishes, he admires his talents—holding it up to the light to reveal a beautiful stained glass painting.

**Great Barrington:** Connor, a CATA artist who is blind, plays an original piece of music on an adaptive percussion instrument—designed and built just for him by CATA Faculty—and his confidence soars!



# our community!

**Lanesborough:** A resident at a local nursing home is energized and happy as she recalls a memory from her childhood. Wes, a faculty artist, strums his guitar and together, they create a song based on her memory.



**Williamstown:** Sam hones her skills as a paid CATA Curator, selecting paintings by her fellow CATA artists with eye-catching colors—and gets ready to greet the community for a free “Meet the Artists” event.



**Lee:** At a day program for people with brain injuries, Nikki adds a swirl of paint to her canvas. With every brushstroke, she’s rebuilding skills and believing in herself. “When I broke my neck, I was paralyzed from the waist down.



Painting with CATA is helping me

remember who I was.”

**Pittsfield:** At a local elementary school, students with special needs stretch and practice deep breaths in an adaptive yoga class. Soon everyone is calm and focused. “Our students AND our staff are so happy to have our weekly CATA yoga!” says the teacher.

**Great Barrington:** On a Saturday morning, families and children with special needs gather for our Art & Tea program. Children and their siblings use stamps and adaptive paint brushes to create colorful masks while their parents relax and find community in a supportive environment.

## PARTNER ORGANIZATIONS

Your support fuels CATA’s partnerships with 67 residences, schools, day programs, disability agencies, and nursing homes to reach people with disabilities across Berkshire and Columbia counties, including:

- Berkshire County Arc (BCArc)
- Berkshire Family & Individual Resources (BFAIR)
- Berkshire Hills Regional School District
- Berkshire Service Group
- Blue Q
- Cadmus Lifesharing Association
- Central Berkshire Regional School District
- Christopher House North
- Columbia County Arc (Coarc)
- ExtraSpecialTeas
- Gould Farm
- Guidewire, Inc.
- Hillcrest Educational Centers
- High Spirit Community Farm
- Hoosac Valley Regional School District
- Integratus Healthcare
- Laurel Ridge Senior Living
- Leander House
- Lee Middle & High School
- Lenox Memorial Middle & High School
- Meadow House
- Mt. Greylock Regional School District
- North Adams Public Schools
- Nonotuck
- Oakdale Residences
- Oak Lodge
- Pittsfield Public Schools
- Riverbrook Residence
- ServiceNet
- Stanton Home
- Taconic Hills Central School District
- UCP of Western Massachusetts

# Thank You for Supporting CATA Artists in 2025

*This list includes supporters who gave to CATA from September 1, 2024 – August 31, 2025*

*Please let us know of any errors or omissions.*

*Thank you also to those generous donors who gave after September 1, 2025—you'll be on our list next year!*

## INDIVIDUAL SUPPORTERS

Anonymous (17)  
Christy & Rob Abel  
Andrea & Gary Abramowitz  
Patrick Abrams  
Julie & Mark Adams  
Judith Albert  
Matthew Alcombright  
**Jane & John Allen**  
Karen Allen  
Helen & Josh Alspector  
Jean Anderer & Donald Donahue  
Kate & Scott Anderson  
**Carolynn Anklam**  
Frances Anthes & Charles Washburn  
Irene Aquino & Ronald Nickerson  
Cindy Armstrong  
Rebecca & Michael Aronson  
**Whitney Asher**  
Elizabeth Aspenlieder  
**Lisa Atkin & Tony Kiser**  
Rebecca Augur  
Patrice & Kevin Auld  
Nancy Badach  
Tim Badu  
Carliss Baldwin & Randy Hawthorne  
Shelley & Jim Balfanz  
**Stephen Ball**  
Robin & Dai Ban  
Dena Bancroft & Colby Lewis  
Selina & Steven Bank  
**Sandra Baron & Gregory Diskant**  
Tracy & Dennis Barquinero  
**Peggy & Peter Barrett**  
Kate Barton & Sam Craig  
Evelyn Battaglia  
**Margaret & James Beauregard**  
Kathleen & Ronald Bedard  
Carolyn Behr  
Lisa Belsky & Andrew Ditton  
**Nancy & Mark Belsky**  
Camilla Bennett  
Rebecca Benson  
Amelia Berg  
**Susan H. Bernardy**  
**Donna A. Bernstein**  
Joyce Bernstein  
Nan Bernstein  
Christian Bianchi  
**Elizabeth & Jay Bikofsky**  
**Victoria & Jonathan Biller**  
**Cynthia & Paul Birdwell**  
Marilyn & Ron Bisiewicz  
**Melissa & John Bissell**

Whidbey Bissell & Alex LaValley  
Maggie & Sam Bittman  
**Dana Bixby**  
Paula & Noel Blagg  
Stephanie Blumenthal  
& Benno Friedman  
Barbara Bockbrader  
Jane Bolster & Steve Wertimer  
Lorey Bonante  
**Vicki Bonnington & David Schecker**  
**Judy & Tim Boomer**  
Alison & Daryle Bost  
Cheryl Boucher  
Joyce & Walter Boucher  
Maura & Jody Boucher  
Dennis Boutsikaris  
Julia Bowen & Brad Svruga  
**Laurie & Stacy Boxer**  
Kim & Ryan Boya  
**Ellen & Steve Boyd**  
**Sarah & Bronly Boyd**  
Pamela Bradford  
**Stephanie & Carl Bradford**  
Shirley Brandman & Howard Shapiro  
Alyson Brandt & Charlie Miller  
**Pamela Breslin**  
Kristin Briggs  
John Brinckerhoff  
**Amy & Steve Bronstein**  
Charlotte Brooke  
Jytte & Jock Brooks  
Nancy Brooks  
**Deborah Buccino & Eric Plakun**  
**Maggie Buchwald**  
**Donna Bullock & Howard Sherman**  
Julie Colantuono Burdsall  
& Stuart Burdsall  
**Kate & Sarah Burdsall**  
**Joan B. Burns**  
Nancy Burt  
**Carolyn Butler**  
Mary & Paul Butler  
**Louise Cadigan & David Hagerty**  
Joann Cahillane  
Carlos Caicedo  
Linda & Jeffrey Caligari  
**Cindy & Jeff Caminiti**  
Barbara Campbell  
John J. Cannon  
**Lynne & Jeffrey Carlotto**  
Eugene Carr  
Stacey Carver  
Sarah Casey  
**Elizabeth & Anthony Cassano**

**Lucie Castaldo**  
Arthur Celedonia  
**Laura & Michael Cestone**  
**Lisa & Eric Chamberlain**  
**Roselle & Alan Chartock**  
**Terri Chegwiddden & Nathan Casto**  
Leslie & Paul Chesloff  
Sheri & Floyd Cheung  
**Gary Christenson**  
Zachary Chudakowski  
**Carol & Rocco Cirigliano**  
**Barbara & Neil Clarke**  
Katie Clarke  
Megan Clarke  
Susan Stetson Clarke  
**Maria & Eugene Cleary**  
**N. Noon Coda**  
Roseleen & Thomas Cody  
Sharon & Timothy Coe  
**Miriam & Herb Cohen**  
**Nadine Habousha Cohen**  
& Edward Cohen  
Jocelyn Collen  
Linda B. Colvin  
**Judy & Gary Conlen**  
Krista Conley  
Lee & Jim Conlon  
Christine Connelly  
Rick Connelly  
**Linda G. Conway**  
Carey & Clifford Cort  
**Liz & Tom Costley**  
**Terri & Terry Coughlin**  
**Bonsai Cox**  
Megan Crampton & Jim Korner  
**Suzanne Crerar**  
**Susan Crofut**  
**Tina & Harvey Crosby**  
Cathy & Robert Crosky  
Brian Cruet & Matthew King  
Becky Cushing Gop  
Tracy & Shaun Cusson  
**Linda J. & John F. Cysz**  
Vicki & Patrick Daly  
Susan & Ned Dana  
Patrick Danahey  
David Dashiell\* & Norton Owen  
**Hope Davis & Bob Braddick**  
Margery Davis  
Ken De Loreto & Ritch Holben  
**Katherine Dean & Frederic Gordon**  
Christina & Paul Del Balso  
Mark Del Signore  
**Lara & Jonathan Denmark**

## LOYALTY CIRCLE:

Thank you,  
loyal supporters!

**Boldfaced names indicate donors who have given to CATA for 5 or more fiscal years in a row.**

Heidi & Ralph Derbyshire  
Colette & Jack Dill  
**The Dobbins Foundation**  
Robin Dorian  
Jennifer Dowley  
James P. Doyle  
**Laura Dubester**  
**Laurie & Jay Dubner**  
John Duby  
Carolyn Dunn  
Margie & Skip Durning  
Marsha & David Edell  
Lynn & Stewart Edelstein  
**Linda & Tim Egan**  
**Janet & John Egelhofer**  
Phillip Elman  
Janet Reich Elsbach  
Keith Emerling  
**Anne & Art Engelberger**  
Ellen & Tom Ennis  
Karen Erickson & Thomas Taylor  
Marie Erwin  
Sarah & Tim Eustis  
**Joan Evans**  
**Gintare Everett**  
**Kathleen M. Favaloro**  
& Christopher Vought  
Laura & Marc Feller  
John Felton & Marty Gottron  
Donna Fenn & Guian Heintzen  
Veronica & Christopher Fenton  
**Rhoda Ferat**  
**Christine Ferrari**  
Patricia Ferrari Behan  
**Tracy & Joe Finnegan**  
Nancy Fitzpatrick & Lincoln Russell  
Sandra Flannery  
Birute Fleck  
**Susan & Henry Flint**

**Mary Kay & William Flowers**

Anna Flynn

**Anne & Tom Flynn****Joanne & Terry Flynn****Nancy & Ron Fontana****Sarah Ford**

Roz Forman

Nadine &amp; Bill Foster

Krissy Fowler

Terri &amp; Johnny Fowler

**Liana Fraenkel & David Oelberg**

Debbie &amp; King Francis

Judith Fraser &amp; Stan Parese

Deidre Freeman

**Vicki Fremont****Elsie & Steven Friedman**

Ruth Friendly

Hannah Fries

**Maryjane & Gerard Fromm**

Carolyn Fulton

**Jeff Gagnon****Kim & Michael Gagnon****Pauline Gagnon****Sherry Galbraith**

Deborah C. Gallagher

Kathleen &amp; Michael Galvin

Kelly Galvin &amp; Ryan Winkles

Molly Galvin

**Beth & Bruce Gamble**

Kathleen &amp; Alfred Garofolo

Pamela Garwood

**JoAnn & Paul Gavity**

Coleen Geoffroy-Lento &amp; Guy Lento

Glenna &amp; Jeffrey Gerard

**Virginia Giddens**

Meghan Gillis &amp; Jill Campbell

**Mary & Alec Gillman**

Bailey Girvan &amp; Dave Morneau

Emi Gittleman

**Marni Gittleman****Stephanie Gittleman, Robert & Ann****Stephanie Gittleman Charitable Fund**

Carol Glazer

Jessica &amp; Matthew Gleason

**Katie Gleason & John Whalan****Marian Godfrey****Kathy Gogel**

Susan Gold

**Judith Goldberg & Larry Vitelli****Irene Goldman-Price & Alan Price**

Hartford Gongaware

John Gonzalez

Elizabeth Goodman &amp; Don Cook

**Jane Goodrich & Jim Youngerman**

Joe Goodwin &amp; Anthony Chojnowski

Wilma Gottlieb

Douglas Gould

Lainie Grant &amp; Matt Larkin

**Karen Chase Graubard****& Paul Graubard****Vicki Grayson & Alan Thiel****Mary Graziano & Robert Mathews**

Sherri Greenbach &amp; David Goldstein

Marcie Greenfield-Simons

**Linda Greenhouse & Eugene R. Fidell**

Madelyn Bonnot Griffin &amp; Curt Griffin

**Maura Griffin & Joe Carry****Freda Grim & Dan Courchaine**

Laura Gronemann

**Jami & Ira Grossman****Jo Grossman**

Karen &amp; Brian Grossman

Antonia &amp; Jack Grumbach

Adrienne &amp; Stuart Gruskin

Sherwood Guernsey

**Roberta & Steve Haas****Mela & Paul Haklisch****John Halbreich**

Virginia Hall

Bobbie Hallig

Mary &amp; Charles Hamilton

**Ellen & Scott Hand**

Sarah &amp; Evan Hardcastle

Kate Harding

Kari Harendorf &amp; Eric Aulicino

Thais Harris &amp; Nicholas Sholley

Sarah Kate Hartt

Heather Hayes &amp; Nate Nickerson

Leticia &amp; Antony Haynes

Liz &amp; Ned Hazen

Deborah Hedwall

Ben Heim

**Heather Wells Heim & Matthew Heim**

Matthew Robert Heim

Sonya &amp; Shaun Heimann

**Ann & Peter Herbst**

Carolyn &amp; Rick Herbst

Katie Herbst

**Dassy & Jerry Herman****Eliza Hewat & Susan Weinberg**

Tamara Hickey &amp; Allyn Burrows

David Highfill &amp; Greg Volger

Lisa &amp; Ray Hiley

**Louise & Arthur Hillman**

Arlyn &amp; Owen Hoberman

**Gail Hochman****Pat & Dennis Hogan**

Hope Holiner &amp; Michael Wolkowitz

Patti &amp; Daniel Holland

**Karen Hopenwasser & Merrick Rossein****Sarah Horne & Alan Wilken**

Sarah Horowitz &amp; David Venarde

Beth &amp; Jeff Horstman

**Dawn & Michael Horton**

Lynne &amp; Robert Horvath

**Beverly Hosokawa**

Christina &amp; Russell Howard

Elizabeth &amp; John Howard

**Laurie & Robert Hug****Susan & Jim Hunnewell****Aeron Hunt & Andrew Schrank****Joan & Jim Hunter****Sarah Hunter**

Ellyn Ihrig

**Elizabeth & Malcolm Ingram**

Jeannie Ingram

Debbie &amp; Michael Irwin

**Janis & Charles Iverson****Jennie & David Jadow****Sandra & Michael Jamrog****Pat Jaouen**

Carolyn Nejaime Jeffrey

Lisa &amp; Steve Jenks

**Jo-Ann G. & Jack P. Johannemann**

Kristen Johanson &amp; Tom Green

**Jane & Charlie Johnson****Ann Jones & Gary Monserud**

Miriam Josephs

**Kelly & Bill Kaiser**

Nancy K. Kalodner &amp; Justin Wernick

Lisa &amp; Timothy Kane

Herb Kantor

Alyce &amp; Michael Kaplan

**Barbara & Ronn Kaplan****Leslie Kaplan****Barry Karson****Rita Kasky****Sherry & Daniel Kasper**

Jennie Kassanoff

Emily Kasten &amp; Ben Corbett

**Mary & Bob Kavanaugh****Joanne Sheehan Keator & David Keator**

Maura Keefe

**Kathleen Keller & Daniel Volchok****Margaret Keller & Brendan Mathews****Maureen Keller-Wood & Charles Wood**

Susan &amp; Andy Kelly

**Ellen Kennedy & Mark Gold****Pat Kennelly & Ed Keon**

Lynn Kenny

Debra M. Kenyon &amp; Peter T. Hess

Julie &amp; Frank Kern

**Mary Lou & Chris Kersten****Sarah Kessler & David Heberlein****Marybeth & Gerry Ketz**

Bethany Kieley &amp; Steven Meis

Lori &amp; Timothy Kiely

**Athena & Richard Kimball****Harvey & Vivian Kimmelman**

Carolyn &amp; Christopher King

**Nancy E. King**

Paula King &amp; Gary Roy

Georgette &amp; Delmore Kinney

Margot &amp; Karlis Kirsis

Janice Kittner &amp; Elwood Smith

**Susan Klebl****Deborah Klein**

Debra &amp; Abram Klein

Laura Klein &amp; John Branigan

**Phyllis Patti Klein**

Yolanda &amp; David Klein

Jeanie &amp; Gary Knisely

**Debra & Rich Koch**

Alice &amp; Jim Kocis

Martin Kohout

Nedra &amp; Richard Koplin

Kathy Korte &amp; Gary Quadrozzi

**Dawn Kramer & Stephen Buck**

Sonya &amp; Raymond Kurzweil

Lisa Kuznick &amp; Hal Belodoff

**Marisa Labozzetta & Martin Wohl**

Jenny Laird &amp; Randy Courts

Richard LaMarita

Carol &amp; Alfred Landess

Dawn Lane &amp; Cynthia Wassell

**Joan Lane\***

Ruth &amp; Nick Langner

**Lynn & Frank LaRagione**

Larkin Farm LLC - Jim, Margaret,

&amp; Jimmy Larkin

**Beth Laster-Nathan & Michael Nathan**

Jorie Latham

Wendy Laurin &amp; Jeffrey Konowitch

Michelle Lauzon

**Vera Lecocq****Ginny Lee**

Robert Lee

**Donna Leep & Dan Waite**

Leslie Lefkowitz

Sandra &amp; Stephen Lehrman

Helaine Lerner

Beth &amp; Peter Levin

**Monte Levin & Gary Lazarus****Elaine & Arnold Levine**

Richard Levine

**Betty Levinson**

Melinda Leyden

Ivana M. Liebert

Sara &amp; Steve Likness

Jessica &amp; Matt Lindley

**Nina & John Lipkowitz**

Pamela Lloyd &amp; Renny Gleeson

Valerie Locher

Joseph Loftus

Jessica Long &amp; Will Winn

Jon Lonoff

Julia Lord

Rebecca Lord

Lisa Loring

Michelle Loubert

Linda &amp; Ed Lucas

Molly Lyon-Joseph &amp; David Joseph

Rachel Mabee

Ingrid MacGillis

**Elaine & Steve Mack**

Lauren &amp; Scott Magrath

**Elizabeth A. Maher**

Peter Malone

Pam Malumphy

**Catherine & Matt Mandel**

Maud Mandel &amp; Steve Simon

Mary Cohen Manning &amp; Robert Cohen

**Barbara & Roger Manring****Marjorie & Hal March****Jennifer Press Marden****& James Marden****Daru Maer-Murray & Raymond Murray****Dorrie Margolin**

Laura Margolis

Lois Markham

Janet Marlow &amp; Alan Brennan

Lusha Martin

**Janis Martinson & Stephen Sagarin**

Anna Masiero

Dawn &amp; Christopher Masiero

**Gina & Devin Mathews**

Kevin Mathews

**Chris & Jim McCarthy****Julie & David McCarthy**

Jesse Tobin McCauley &amp; Joe McCauley

Suzanne &amp; James McElroy

Fran &amp; Ed McGillicuddy

**Fr. Brian McGrath****Buzz & Robin McGraw****Nancy McIntire**

Tim McKeivitt

Ali McManus

**Kate McNulty-Vaughan & Bob Vaughan**

Margaret McTeigue &amp; Thomas Wessel

Jeanne &amp; Robert Meister

Patrice C. Melluzzo

**Julia Melnick**

Jeffrey Messer

Dr. Jennifer Michaels

**Brian Mikesell & John Weinstein**

Kara &amp; Alex Mikulich

Shawn & Travis Mille  
**Annette & Michael Miller**  
**D. Lee & Sharyn Miller**  
Leslie Miller  
**Nancy Miller**  
**Trudy Weaver Miller**  
**& John-Arthur Miller**  
**Kelly & Dave Milligan**  
**Jamie Minacci & Thomas Manisero**  
Dede Miner Rathbun  
Leigh Minor & Chuck Leach  
Melissa Mishcon & Charles Ferris  
**Linda Mitchell & Laurence Cohen**  
Marybeth & Kevin Mitts  
Frosty Montgomery  
**Margot & William Moomaw**  
**Diane B. Moran**  
Kristen & Graham Moriarty  
**Mindi Morin & Max Scherff**  
Yvette & Michael Morneau  
Meg Mortimer & David Lloyd  
Jaye Alison Moscariello  
Andrea Sholler Mosley & Bart Mosley  
**Judy Moss**  
**Sharon & Matthew Mozian**  
Mary Mullen & Larry Oberwager  
Holly & Tom Murray  
Geoff Nader  
**Caitlin & Mitch Nash**  
**Mary & Seth Nash**  
**Cindy & Rick Nasman**  
Pauline Nault  
**Leslie Nelson & Michael Wainwright**  
**Lisa Nelson & Stephen Alsdorf**  
**Katherine G. Ness**  
Natalie & David Neubert  
Melissa Newman & Raphael Elkind  
Rebecca Newman  
**Sandra Newman**  
**Sarah Nicholson & Roger Reed**  
Christina Noel  
George Nugent  
Nancy Nysten & David Dethier  
Linda Olson  
**Mary Pope Osborne & Will Osborne**  
**Danielle & Peter Palleschi**  
Brenda & Andy Papadatos  
**Carol Parrish & Paul Clark**  
Barbara D. Pastie  
**Bernadette Patynski & Stephen Bayne**  
**Barbara Paul & Deborah Levinson**  
Lucy Pavalock & Carolyn Jones  
Maryphena Peabody  
Michael Peabody  
Diane Pearlman  
Julie Pearson & Aaron Oster  
**Susan & Arthur Peisner**  
Lauren Pellegrino  
**Virginia Peniuk**  
Jennifer Pennington & Don Dickson  
**Claudia Perles & Gerry Fultz**  
Deborah Personius  
**Alison & Richard Peters**  
Patricia & Stephen Peters  
Sally & Tim Petersen  
Eleana Peterson  
**Jane W. Peth\***  
Jane Phend  
**Nancy & Bernie Picchi**

Lisa Piemont  
Donna Pignatelli  
Smitty Pignatelli  
Jerome Pinto  
Donald Platt  
Libbie & David Poppick  
**Nancy & Fred Poses**  
Angela Poulimenos  
**Marianna Poutasse & Eric Korenman**  
**Amy & Eric Pressman**  
Laurie & Gerard Puia  
Patricia A Purdy  
**Mary Ann & Bruno Quinson**  
**Elaine Radiss & Rich Petrino**  
**Cris Raymond**  
**Emily Rechnitz**  
**Nancy & Eric Reeves**  
Peggy Reeves  
Thomas E. Reidy  
Jennie Reins  
**Pam Reznick**  
**Ashley & David Rice**  
Karen Richards  
Helene Richter  
Chris Riffle  
**Carol & Michael Riordan**  
Patrick Riordan & Steven Hatfield  
John Ritz  
Deborah Rivel  
Rachel Rivin & Corinne Heyes  
**Elizabeth Rivlin**  
**Jean Rivlin**  
Barbara Robertson  
**Charlotte & Don Rodgers**  
Ellen & Tom Rogers  
Bev Rohlf  
Julie Rohwein & Jonathan Aibel  
**Sophia Romeu & Cameron Besse**  
Jason Root  
Danielle Rosen  
**Paula & Andy Rosen**  
Terry Rosenberg & Elliot Schildkrout  
Susan Rosenfeld & Peter Hoffman  
Esther Rosenthal  
**Ann Rosewater & Robert Kronley**  
Leigh Rosoff  
Margaret Round  
**Georgianne & Jean Rousseau**  
Ellen Rowntree  
**Anne & Joe Roy**  
**Carol J. Rucinski**  
**Amy Rudnick & Ben Hillman**  
**Antoinette Russell & Louis Bailey**  
**Linda & Frank Russell**  
Vicky Russell & Jim Thieriot  
**Jill & Brendan Ryan**  
Kelly Rybczyk  
Beth Sack  
**Victoria & Scott Saltzman**  
**Pat & Marty Salvatore**  
**Maureen Salvatore**  
Carol & Merrill Sanderson  
**Pamela Sandler, AIA Architect**  
Cherri & Scott Sanes  
Patrie & Michael Sardo  
**Dale Saul**  
Virginia & Richard Scarlet  
**Karen & Chuck Schader**  
**Margie Schaffel & Peter Belson**

**Susan Scheftel & Richard Finkelstein**  
**Arlene & Gary Schiff**  
Mike Schiffer  
Katie & Will Schmidt  
Carol Schneider & Joe Cacaci  
Chaya Schneider  
**The Schnesel Family Fund**  
Keely Flynn Schoeny & P.J. Schoeny  
Neal B. Schultz  
Charles Schulze  
Bettina Schwartz & Mark Firth  
Rose Schwartz  
Harriet & Stuart Schweitzer  
Carol & Richard Seltzer  
**Marcie Setlow & David Scribner**  
**Jennifer J. Sewall**  
Lilliandra Shaffer  
David Shapiro  
**Harvey Shapiro**  
Susanna & Tom Sharpe  
**Leslie & Stephen Shatz**  
Sarah Shatz  
Emily & Simon Shaw  
Jean Shen  
**Eva & Kip Sheridan**  
**Cindy Shogry-Raimer**  
The Sholley Foundation  
Dana & Jeff Siegel  
Saul Silverstein  
Dominique Singer  
**Flo Sinsheimer**  
**Maria Sirois**  
**Larry Smallwood**  
**Andrea & John Smith**  
**Anne Smith & John Goodhue**  
**Craig Smith**  
**Elizabeth & Samuel Smith**  
**Kara Smith & Brian Kantor**  
Susan Hart Smith  
**Linda Smothers & Richard Gregg**  
Elisa & Mark Snowise  
Becky & Joe Sorrentino  
Katy Sparks & Tim Prinz  
**Janet Lee Speed**  
**JoAnne Spies**  
Samantha Spina  
Heather Sprague  
Cynthia Stack & Bernard Haan  
Donna & Erik Steinert  
Gaby & Alex Stern  
Bonnie & Jeff Stevens  
Norma Stobbe  
Stockbridge Girl Charitable Fund  
Janine & Jamal Stockton  
**Abbie Strassler**  
**David H. Strassler**  
**Toni Strassler**  
Matthew Straus  
**Joanna & Peter Strauss**  
Susan Street & Paul Neely  
Betsy Strickler  
Maggie Strohmer  
Wendy Strothman & John Bishop  
Maureen Strype & Sam Crane  
**Jane & Win\* Stuebner**  
Susan Sultan  
**Jonathan Swartz**  
Shelley Swofford  
**Patricia Tarrant**

William R. Taylor  
Theresa Terry  
**Sandy & Russ Thomas**  
Laurie & Peter Thomsen  
Diane & Jerry Thorson  
**Sheila & Randy Thunfors**  
Edith Thurber & Kevin O'Rourke  
**Karen & Gary Tibbetts**  
**Gina & John Toole**  
**Liana Toscanini**  
**Cheryl Tosk**  
Shari Tosk  
Terri & Stephen Tosk  
James Totten  
Stephen Trumble  
Natalie Tublitz  
**Linda Tucker**  
Mary Ann Turney  
Judith Uman & Michael Goodman  
**Judy & Mark Usow**  
**Holly & John Valente**  
Georgianne Valli  
**Suzannah & Pieter Van Schaick**  
**Adrian\* & Judith\* Van Zon**  
Elizabeth Varachi & Matt Maturevich  
Ann Volkwein  
Jennifer & Kassy Vorce  
Katherine Vorwerk & Robert Feldman  
Elizabeth Walker & Dubois Thomas  
Jeri Wall  
Marcia Walsh & Eric Block  
Katrina & Rick Walton  
Melinda Walton  
Kellie Ward  
Linda Ward  
**Nicholas Wardle**  
**Paula Wardynski & Jed Scala**  
Alexandra A. Warshaw  
**Chris Watford & Aaron Likness**  
**Karin Watkins**  
**Cornelia & Ben Webster**  
Elizabeth Weibrecht  
Sean Weil  
**Diane I. Weinstein**  
**Jacqueline & Alan Weinstein**  
**Ruth & Bill Weinstein**  
**Wendy & Willy Welch**  
**Tyler & Chris Weld**  
**Claudia E. Wells**  
**Maureen & Daren Wells**  
Sue & Pete Wells  
Laura Wentzel  
**Suky & Tom Werman**  
**Laurie & Jan Werner**  
**Bridget & Mark West**  
Mariët Westermann & Charles Pardoe  
Joseph Wheaton  
Natalie Wheeler  
Charles White  
Laird & Reid White  
Marlene White  
Suki White  
Kat Whitney  
John & Carrie Wilbanks  
Keaton Wilbanks  
Kenna Wilbanks  
Kathy & Ronnie Wilbanks  
Leah & Robert Wilcox  
Anne Wild-Rocheleau

Marge & Ken Wiles  
**Carol & Rob Williams**  
**Liz & Mark Williams**  
Meredith Sue Willis & Andrew B. Weinberger  
Evelyn & Eric Wilska  
**Janet & Jim Windham**  
Valerie Winig  
**E.E. Winters & Chris White**  
Terry & Jay Wise  
Marcie Wistar  
Lisa & Frank Wohl  
**Christine Wojnar**  
Bonnie & Stuart Wolf  
Diane Wortis & Joe Bozza  
Carrie & Bill Wright  
Chuck Yanikoski  
**Mary & Steve Yarmosky**  
**Louise Yohalem**  
Jennifer & Newell Young  
**Paula & Stuart Yurman**  
**Christine & Ray Zelehoski**  
Cheryl Zellman  
**Barbara Zheutlin & Jonathan Hankin**  
**Kathleen & John Zutter**  
Gretchen Zwart

**BUSINESSES & ORGANIZATIONS**

ABC Clothing Shop  
Acrisure  
Adelson & Company PC  
Aon Insurance  
**Apella Capital**  
Authentic Talent & Literary Management  
**Balance Rock Investment Group**  
Barrington Brewery  
**Berkshire Bank**  
Berkshire County Arc  
**Berkshire Health Systems, Inc.**  
**Berkshire Magazine**  
Berkshire Money Management  
**Berkshire Mountain Distillers**  
**Berkshire Net Results**  
Berkshire Photo Booth / Tricia McCormack Photography  
Berkshire South Regional Community Center  
**Black Ice, LLC**  
**Blue Q**  
**Blue Spark Financial**  
Brainspiral Technologies  
**Brava**  
Canyon Ranch  
Casablanca  
Christ Trinity Church  
Colebrook Realty Services, Inc.  
**Dana Bixby Architecture**  
Dare Bottleshop & Provisions  
**Domaney's Liquors & Fine Wines**  
Drury, Patz & Citrin, LLP  
ExtraSpecialTeas  
Fairview Hospital  
**Frames on Wheels**  
Frankie's Ristorante Italiano  
GB 9  
**Granville House**

**Greylock Federal Credit Union**  
**Guido's Fresh Marketplace**  
Hammill Design  
Ed Herrington, Inc.  
**High Spirit Community Farm**  
Hillcrest Educational Centers, Inc.  
Hot Plate Brewing Co.  
**Interprint, Inc.**  
Kiwanis Club of Lee  
Sonya Kurzweil Developmental Center  
**Lee Bank**  
Lee Wash & Dry  
Lenox Library Association  
Lenox Wash & Dry  
Live Balanced Bookkeeping  
Mahaiwe Tent Company  
Main Street Hospitality  
Mass Audubon Berkshire Wildlife Sanctuaries  
Mass Mutual  
Mezze Catering & Events  
Mill Town Capital  
Moon Hill Brewing Co. & Gardner Ale House  
**MountainOne**  
**Dr. Sharon Mozian, MD, PC Mungy**  
MyCom Federal Credit Union  
Neuberger Berman  
**Ombra**  
**One Mercantile**  
**Park Square Financial Advisors of Raymond James**  
**PayPal Giving Fund**  
Piretti Real Estate  
Prairie Whale  
Qualprint  
**Ray Murray, Inc.**  
The Red Lion Inn  
Riverbrook Residence  
Rob Alberti's Event Services  
**Shakespeare & Company**  
Shear Design  
Shooz  
Stanton Home  
**Stone House Properties**  
SWTRZ  
T&J Valve  
Technical Development Corporation (TDC)  
Timpone Construction  
Wheeler & Taylor, Inc.  
William Lyon & Son Carpentry  
Williamstown Community Chest  
Windy Hill Farm  
**Wingate Ltd.**

**FOUNDATIONS & MUNICIPALITIES**

Anonymous  
**The Howard & Katherine Aibel Foundation**  
Appelbaum-Kahn Foundation  
**Barr Foundation**  
**Berkshire Bank**  
Berkshire Community College Foundation  
**Berkshire Life Charitable Foundation**

Berkshire Running Foundation  
**Berkshire Taconic Community Foundation, including:**  
**Arts Build Community Initiative**  
**Central Berkshire Fund**  
Fund for Columbia County  
Fund for Williamstown  
The James & Robert Hardman Fund for North Adams  
Pittsfield Education Enrichment Fund  
South Berkshire County Fund  
William J. & Margery S. Barrett Fund for Adams, Cheshire & Savoy  
**Black Rock Foundation**  
**The Campbell Family Foundation**  
Children's Cerebral Palsy Foundation  
**Coolidge Hill Foundation**  
**Crane Charitable Funds**  
**The Feigenbaum Foundation**  
The Gilson Family Foundation  
GKV Charitable Foundation, Inc.  
The Green Foundation  
**Rita J. & Stanley H. Kaplan Family Foundation, Inc.**  
**The Ruth Krauss Foundation**  
Lee Bank Foundation  
The Eleanor Lord Fund of Berkshire Taconic Community Foundation  
**Massachusetts Cultural Council**  
**The Donald C. McGraw Foundation**  
Mill Town Foundation  
People with Disabilities Foundation  
Poses Family Foundation  
Sheehan Keator Foundation  
**Dr. Robert C. & Tina Sohn Foundation**

**GIFTS MADE IN HONOR OF**

Allegra Aronson  
Nancy & Mark Belsky  
Judy Boomer  
Liz & Tom Costley  
The Coughlin Family  
Grace Coughlin  
Kelly Galvin  
Stephanie Gittleman  
Carol Glazer  
Jami & Ira Grossman  
Jessica Hansen  
Kate Harding  
Betsy Hart  
Heather Wells Heim  
The Hotchkiss School Analogue Photo Magazine and Photo League Clubs  
Sarah Hunter  
Stanley Leibowitz  
Beth Liebowitz  
The Marden Family  
Allison Ann Mix  
Margaret O'Keefe  
Mary Pope Osborne & Will Osborne  
Casey E. Page  
Roman Palleschi  
Asa Peabody  
Elaine Radiss & Rich Petrino  
Jacob Ross  
Marshall Russell  
Eric Schumann  
Leslie & Stephen Shatz

Laurie Sunderland  
Myles Tosk  
Max Richter Wagenberg  
Chris Watford  
Matthew Weinstein  
John Whalan  
Eric White  
Liz & Mark Williams  
E.E. Winters & Chris White

**GIFTS MADE IN MEMORY OF**

Kenneth Butler  
Abbie Colpoys  
David Dashiell  
Raymond A. Gagnon  
Kenneth Gogel  
Stephan Green  
Charles Keller  
Barbara M. McManus  
Leigh Merlini  
Hannah Peabody  
Michael Timothy Platt  
Joseph Reich  
Dr. Robert K. Rosenthal

**LEGACY SOCIETY**

Anonymous  
Lisa & Eric Chamberlain  
Carol Glazer  
Heather Wells Heim & Matthew Heim  
Harvey & Vivian Kimmelman  
Mary Pope Osborne & Will Osborne  
Elaine Radiss & Rich Petrino  
Carol & Michael Riordan



**Join the CATA Legacy Society:**

When you name CATA as a beneficiary in your will, living trust, or insurance policy, you leave a legacy that provides life-changing programs for CATA artists—today and into the future.

Join the CATA Legacy Society and be part of an amazing group of people who have chosen to sustain CATA's work into the future.

Contact Marybeth Johnson, Development Director, to join CATA's Legacy Society and make a lasting difference for CATA artists!



Terry (Nonotuck) plays an original piece of music on an adaptive guitar—designed and built just for her by CATA Faculty.

**“The benefits of CATA linger long after the workshops. People feel grounded and appreciated, and their self-esteem is stronger. CATA yields happier people.”**

CATA PROGRAM PARTNER

# Your Impact... In Your Words

**John Whalan has been part of the CATA community since first joining the board in the late 1990s. Together he and his wife Katie Gleason have remained committed to CATA as volunteers, and now as longtime supporters. John is President & CEO of Black Ice, LLC, a software development company based in the Berkshires, and Katie serves as a Regional Manager for ProActive Healthcare.**



We spoke with John about his and Katie's long involvement with CATA, including his board service, and why CATA matters so deeply to them—now more than ever.

---

## **How did you first get involved with CATA?**

I was introduced to Community Access to the Arts in the late '90s, helping to create a short documentary film about CATA's work. As someone with a loved one with developmental disabilities, I've seen how often people are underestimated, even marginalized, and not given opportunities to fully express who they are. CATA stood out for how clearly it recognizes and invests in people's creativity, interests, and agency.

## **What stands out to you about CATA's approach?**

CATA doesn't just make space for people with disabilities, it holds them at the center. The programs are rooted in artistic excellence and genuine care, and that combination is powerful.

At its core, CATA is built on trust and relationships—with artists with disabilities and their families, with partners, with donors, and with the whole community. What CATA is doing in our community is so exciting. It's an honor to be part of it.

## **How have you seen the impact of CATA ripple out into the community?**

While CATA's work centers people with disabilities, *we all benefit*. We get to know people who we might see in everyday circumstances—in the neighborhood, around town—but who we otherwise wouldn't know. When we go to a CATA performance or exhibit, you discover that someone you pass on the street is also an artist, a dancer, actor, poet, or comedian. CATA makes those connections possible.

## **Why is CATA's work vital right now?**

CATA helps us move past assumptions to see people more fully. It shifts our relationships with each other, across the entire community. The sense of belonging CATA is building is essential right now. CATA is changing the paradigm—bringing people together and strengthening our community.

## **Why do you choose to give to CATA—and why do you hope others will, too?**

**As donors, trust matters. Katie and I need to know that an organization reflects our values and has strong fiscal stewardship. CATA checks every box.** It's deeply trusted by the individuals and families it serves, and that trust is well earned. CATA has shown that it can stay true to its mission even in moments of uncertainty in our world—responding to challenges with clarity, care, and financial responsibility.

Katie and I know that when we give, our support is making a real difference in people's lives. By supporting CATA, you are helping build a more inclusive, connected community.

# Fiscal Year 2025 Financial Overview

Fueled by your support, CATA grew innovative programs for people with disabilities, carefully managing our finances and resources all the way. For 12 years in a row, CATA has met budget with no deficit, posting a surplus each year to support our continued financial stability. In 2025, we strategically drew from a Board-Designated Reserve created to fund innovative pilots—allowing us to launch new programs to meet the needs of CATA artists.

CATA has continued to deepen our core commitment to financial accessibility, providing programs for significantly reduced costs or entirely free of charge to open the door for more people with disabilities to participate in

the arts. Generous donors like you stepped forward to make our work possible: Donations made up 85% of our overall income. Your gifts directly supported programs for low-income people with disabilities who crave and deserve creative outlets.

As always, programs serving artists with disabilities were our primary expense. Your generosity sustained workshops, exhibits, and performances that provide life-changing opportunities for CATA artists of all ages to grow and thrive.

## Fiscal Year 2025\* September 1, 2024 - August 31, 2025

### INCOME:

<b>Contributed:</b>	<b>\$2,212,815</b>
Individual:	\$1,644,318
Corporations:	\$106,248
Grants/Foundation:	\$462,250

<b>Board Designated Program Innovation Fund</b>	<b>\$200,000</b>
---	------------------

<b>Earned</b> <i>including program fees and art sales</i>	<b>\$ 383,603</b>
--	-------------------

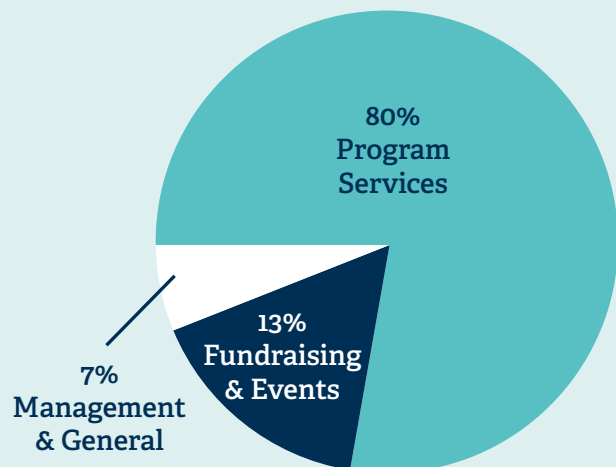
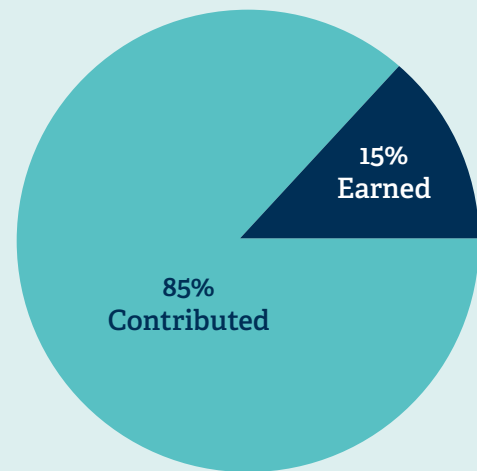
<b>Total Income:</b>	<b>\$2,796,417</b>
----------------------	--------------------

### EXPENSES:

Program Services:	\$2,232,886
Fundraising & Events:	\$354,997
Management & General:	\$180,457

<b>Total Expenses:</b>	<b>\$2,768,340</b>
------------------------	--------------------

*\*Pre-audit, approved by Board and Finance Committee*





**“I feel everything inside me wants to express myself.”**

**CATA ARTIST**

**Allegra (High Spirit Community Farm/ExtraSpecialTeas) learns new skills and lets her talents shine at CATA—with guest artist Katie Drablos from the Rockettes!**

## CATA STAFF

Margaret Keller, *Executive Director*

### PROGRAM

Jeff Gagnon, *Program Director (School Programs)*  
Kelly Galvin, *Program Director (Agency Programs)*  
Kara Smith, *Program Director (Studio Programs)*  
Courtney Maxwell, *Program Coordinator*

### RESIDENT FACULTY ARTISTS

Wes Buckley, *Resident Music Faculty & Music Coordinator*  
Beth Liebowitz, *Resident Dance Faculty & Performance Manager*  
Caroline Calkins, *Resident Theater Arts Faculty*  
Lucie Castaldo, *Resident Visual Arts Faculty*  
Adam Gudeon, *Resident Visual Arts Faculty*  
Katie Herbst, *Resident Music Faculty*

### COMMUNICATIONS

Chris Watford, *Communications Director*  
Nina Boutsikaris, *Grants & Communications Coordinator*  
Jeremy Lovelett, *Communications Associate*

### DEVELOPMENT

Marybeth Johnson, *Development Director*  
Kelly Rybczyk, *Gift Officer*  
Bailey Girvan, *Associate Director of Development*  
Daniella Santamarina, *Development Associate*

### ADMINISTRATIVE

Katie Clarke, *Administrative Director*  
Renée Far, *Interim Office Manager*

## CATA BOARD

Heather Wells Heim, *President*  
Emily Rechnitz, *Vice President*  
Eva Sheridan, *Vice President*  
Ira Grossman, *Treasurer*  
Mindi Morin, *Secretary*

Sandra Baron  
Judy Boomer  
Liz Costley  
Terry Coughlin  
Carol Glazer  
Sarah Hunter  
Meg Mortimer  
Will Osborne  
Rich Petrino  
David Poppick  
David Rosenthal  
Elaine Radiss  
Gary Schiff  
Linda Smothers  
John Whalan  
Chris White

## FACULTY ARTISTS

### ACTING & THEATER

Gregory Boover  
Caroline Calkins\*  
Kelly Galvin  
Caitlin Langstaff  
Maddy Maggio  
Diane Prusha  
Ryan Winkles

### CREATIVE WRITING

Janet Reich Elsbach

### DANCE

Francesca Baron  
Luana Dias David  
Beth Liebowitz\*  
Derion Loman & Emily Kent  
(Pilobolus Dance Company)  
Noel Staples-Freeman

### JUGGLING

Maddy Maggio  
Ryan Winkles

### MUSIC

Wes Buckley\*  
Aimée Gelinás  
Katie Herbst \*  
JoAnne Spies

### VISUAL ART & PHOTOGRAPHY

Lucie Castaldo\*  
Renée Far  
Jeff Gagnon  
Adam Gudeon\*  
Marlene Marshall  
Courtney Maxwell  
Camille Roos\*  
Kara Smith

### YOGA

Paula Boyajian  
Pam Levin

### A.R.T. TRACKERS & ADAPTIVE PAINTING

Adam Gudeon\*  
Pat Hogan  
Stefanie Weber

\*Resident Faculty Artists

community access



**Community Access to the Arts (CATA) nurtures and celebrates the creativity of people with disabilities.**

**420 Stockbridge Rd, Suite 2, Great Barrington, MA 01230**  
(413) 528-5485 • [info@CATAarts.org](mailto:info@CATAarts.org) • [CATAarts.org](http://CATAarts.org)

**On the cover:** Katherine (BCArc /UCP of Western MA) shares her talents at CATA—thanks to you!